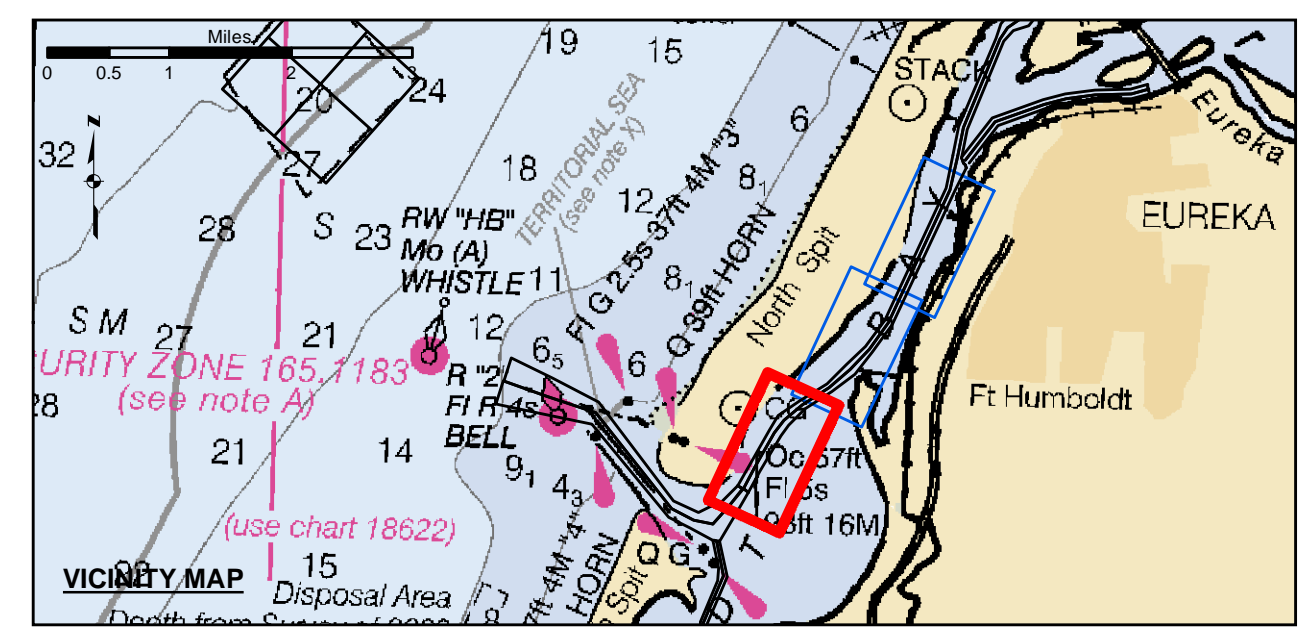


Angle Point	Easting	Northing
06	5945167.02	2166658.81
07	5945752.39	2166911.73
08	5946464.09	2167631.33
09	5946953.59	2168479.53
10	5947831.59	2170042.13
11	5948193.09	2170679.33
12	5949124.59	2171267.03
13	5950306.09	2172059.13
14	5951141.79	2172853.23
15	5951976.39	2173648.23
16	5952816.79	2174408.43
17	5953484.79	2175204.43
28	5956165.00	2181942.62
29	5956348.68	2181424.64
30	5955866.99	2180393.43
31	5953163.09	2174604.63
32	5952300.39	2173413.53
33	5951516.79	2172459.53
34	5950526.69	2171724.13
35	5949343.09	2170952.03
36	5948674.79	2170232.13
37	5948301.49	2169794.33
38	5947388.59	2168234.23
39	5946907.49	2167381.23
40	5946431.39	2166537.23
C07	5946085.69	2166728.23
C08	5946686.99	2167508.93
C09	5947166.09	2168359.43
C10	5948049.99	2169917.43
C11	5948433.69	2170455.43
C12	5949233.79	2171119.43
C13	5950417.39	2171891.43
C14	5951329.29	2172856.43
C15	5952138.39	2173530.43
C16	5952989.89	2174706.43
C17	5955671.89	2180451.43

US Army Corps of Engineers
 San Francisco District
 450 Golden Gate Ave
 San Francisco, CA 94102

DISCLAIMER
 The United States Government furnishes this data for informational purposes only. The data represents the results of data collected by the United States Government. The United States Government makes no warranty, expressed or implied, concerning the accuracy, completeness, or timeliness of the data. The user of this data is responsible for its use and for any liability whatsoever to any person by reason of any use of the data. The data is provided "as is" and the United States Government makes no representation or warranty of any kind, either express or implied, regarding the accuracy, completeness, or timeliness of the data. The user of this data is responsible for its use and for any liability whatsoever to any person by reason of any use of the data. The data is provided "as is" and the United States Government makes no representation or warranty of any kind, either express or implied, regarding the accuracy, completeness, or timeliness of the data.

Prepared Under the Direction of JOHN D. CUNNINGHAM LT Colonel, C.E., District Engineer	Surveyed By: PDT	Chart Date: Nov 02, 2020
Submitted: Hydro Survey Team Leader	Plotted By: PDT	Designed by: PDT
Recommended: Chief, Hydro Survey Section	Checked By: PDT	Drawn by: PDT
Approved: Chief, Construction Branch		



- Federal Navigation Channel
- Shoaling Area
- Placement Area
- Anchorage Area
- Wreck Area
- Submerged Wreck
- Angle Point
- Beacon, General
- Obstruction Point
- Navigation Buoy
- Navigation Buoy
- Shoalest Sounding*
- Contours**
- 38
- 37
- 36
- 35
- 34

NOTES:
 DRAWINGS NOT TO BE USED AS NAVIGATION. ONLY CHANNEL CONDITION AT DATE OF SURVEY. THE LOCATION OF ALL NAVIGATION AIDS ARE BASED ON INFORMATION PROVIDED BY THE U.S. COAST GUARD. BUOY LOCATION REPRESENT THE POSITION OF THE SINKER ONLY.
 SURVEYED BY THE CORPS OF ENGINEERS.
 SOUNDINGS WERE TAKEN BY FATHOMETER AND ARE SHOWN TO THE NEAREST TENTHS OF A FOOT.
 SOUNDINGS ARE BASED ON THE DATUM OF MEAN LOWER LOW WATER AT THE LOCALITY.
 PLANE GRID AND COORDINATES ARE BASED ON THE STATE OF CALIFORNIA COORDINATE SYSTEM, LAMBERT CONFORMAL PROJECTION, ZONE 1 NAD 83, CALIFORNIA, AS DESCRIBED IN SPECIAL PUBLICATION NO. 235, PUBLISHED BY THE NATIONAL OCEAN SURVEY.

PROJECT DEPTHS ARE AS FOLLOWS:
 BAR & ENTRANCE CHANNEL = 48 FEET
 NORTH BAY, SAMOA TO MILE 5.0 & = 38 FEET
 EUREKA CHANNEL, FIELDS LANDING CHANNEL & MILE 5.0 TO "N" STREET = 26 FEET
 SOUNDINGS ARE BASED ON TIDE GAUGES REFERENCED TO U.S.C. & G.S. BENCH MARKS AS FOLLOWS:
 EUREKA & SOMOA CHANNELS - B.M. NO. 4 (1906) ELEV. 33.61' M.L.L.W.
 ENTRANCE & NORTH BAY CHANNELS - B.M. NO. 9 (1937) ELEV. 16.35' M.L.L.W.
 FIELDS LANDING CHANNEL - B.M. NO. 5 (1925) ELEV. 8.52' M.L.L.W.

CALIFORNIA
 HUMBOLDT COUNTY
HUMBOLDT BAY
NORTHBAY CHANNEL
POST-DREDGE SURVEY
 29-30 OCTOBER 2020

Sheet Reference Number
 1 of 3